



Flspace Project Webinar (I)

July 24th, 2014

Flspace core platform Features



Said Rahma
Software Project Manager
ATOS Spain



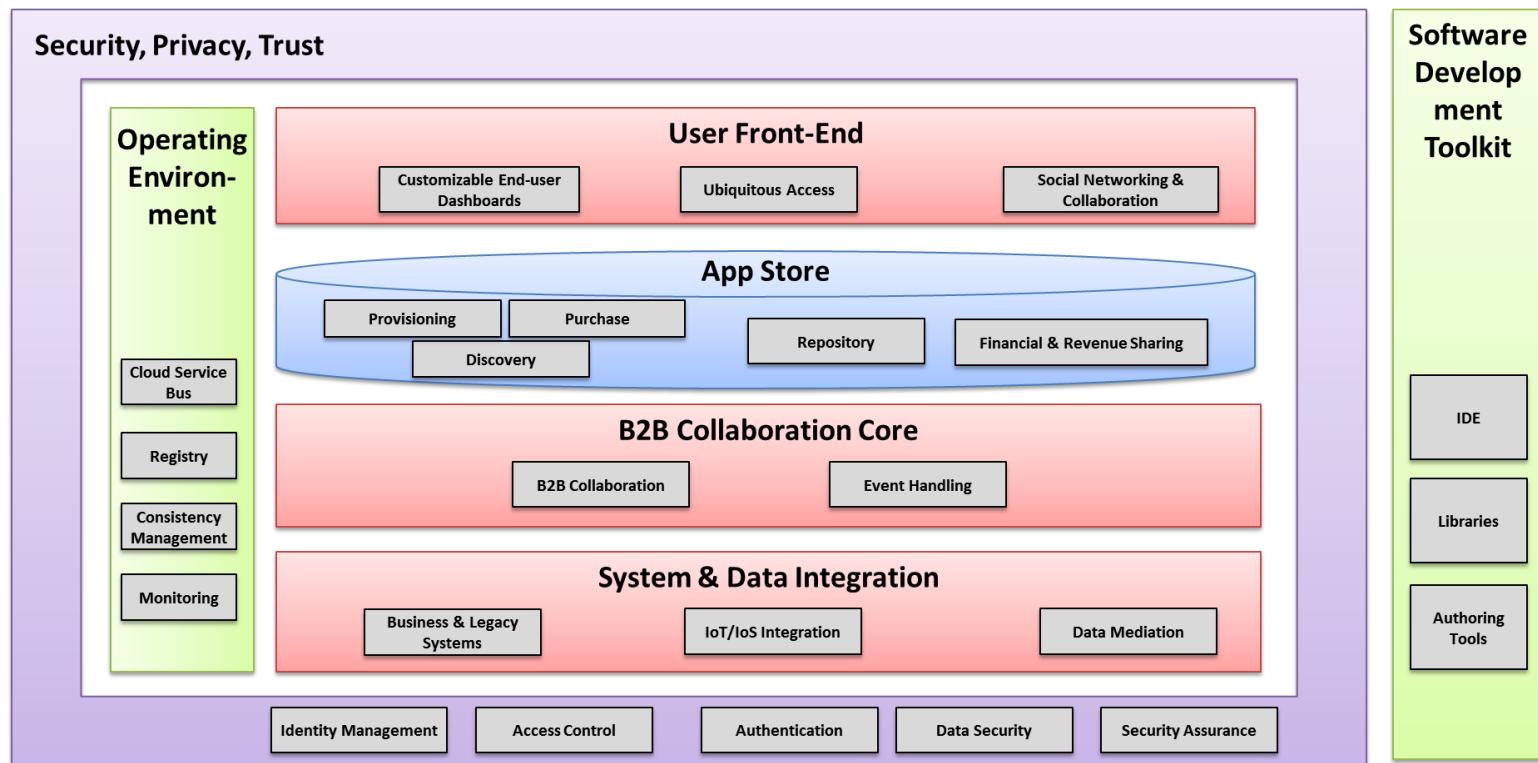
Table of content

- Overview
- High level summary of platform features
- Roadmap
- Tools for developers
- Questions



Overview

- Flspace core platform
 - Core components, operative environment (Cloud Service Bus), SDK





Overview - Core components

- **User Front-End**
 - The User Front-End is the main users interface of the platform to access the services and Apps, and constitutes a configurable and graphical user interface
- **System & Data Integration (SDI)**
 - The SDI is the main entry point and interface (based on API) between the platform and the “outside world” allowing the integration of existing systems (external systems and services)
- **B2B Collaboration Core (B2B)**
 - B2B Core ensures that all information and status updates are provided to each involved stakeholder in real-time allowing the creation, management, execution, and monitoring of collaborative business processes based on the Event Processing Module (EPM) and Business Collaboration Module (BCM) components
- **App Store (Store)**
 - The App Store provides the tool-supported infrastructure for providing, finding, and purchasing Flspace Apps
- **Cloud Service Bus (CSB)**
 - The Cloud Service Bus provides event bus and pub/sub capabilities. The CSB is part of the Operating Environment that ensures the technical interoperability and communication of Flspace components and Flspace Apps
- **Security Privacy Trust (SPT)**
 - The Security Privacy & Trust framework provides secure and reliable access and exchange of confidential business information and transactions using secure authentication and authorization methods



High level summary of platform features (I)

- Main User Front-End features:
 - Customizable user dashboards
 - Social networking and collaboration features
 - Access from anywhere across multiple devices
- Overview of the Front-End features:
 - Secure access (Login/Logout)
 - Profile management (users, companies and personal profile, search profiles)
 - Personal task management
 - Social network (Likes, share relevant news, announcement capabilities, Friends/companies suggestions, indirect relations and most followed companies, reputation & recommendation, basic user analytics, measurement of profile completed,...)
 - Real-time messaging (chat)
 - Email management (News and posts)
 - Notification management
 - Dashboard GUI customization (themes, languages, visual aspects, colors, fonts,...)
 - Administration of group (create and join communities,...)
 - Advanced search and filtering capabilities
 - Geolocation integration mechanism (for user location information)
 - Flspace Mobile Application
 - Guided tour, help documentation



High level summary of platform features (II)

- Main System & Data Integration (SDI) features:
 - Support for connecting business and legacy systems
 - Support for connecting external services
 - Support for handling heterogeneous data by means of mechanisms for data mediation
 - Provide domain message generation mechanism
 - The SDI offers two different types of communication, depending on the resources to communicate:
 - For internal communications or communications between the different components of the Flspace platform.
 - To communicate with external systems
 - Provide a set of API as a generic REST API to support adding and using new capabilities at runtime (including messages and REST endpoints to connect external systems)



High level summary of platform features (III)

- Main B2B features:
 - Provide collaboration capabilities (BCM Engine)
 - Capture the information of so-called Business entities
 - Exchange information among collaborating stakeholders
 - Manage the status and control the collaborative business processes
 - Orchestrate the different processes from different stakeholders and assure the correct sequence of the tasks execution
 - Provide Event Processing capabilities (EPM Engine)
 - Detection and analysis of events coming from activities in the collaborative process
 - Events monitoring (coming from external systems or sensors)
 - Support of situation detection capabilities: reactive and proactive
 - Provide authoring tools based on the ACSI (Artifact-Centric Service Interoperation) project, that allow defining business entities resp. event rules



High level summary of platform features (IV)

- Main App Store features:
 - Provide the software infrastructure to support the provisioning, discovery, purchase, and use of Flspace Apps, including a registry of Apps
 - Provide Facilities for financial management of the Flspace Apps (pricing, payment, revenue sharing)
 - Provide the means and the tool-supported infrastructure to manage the App Store
 - Functionalities and capabilities among others:
 - Manage business contract
 - Register Apps (information related to the Apps, what, who,...)
 - Provide the access to the Flspace Apps
 - Search and Find Flspace Apps
 - Purchase Flspace Apps
 - Manage the Apps repository
 - Store configuration widget and GUI (Graphical User Interface)



High level summary of platform features (V)

- Main CSB features:
 - Provide the middleware that enables the integration of different Flspace service components and applications
 - Provide event bus and pub/sub capabilities, queuing, synchronous request/response, asynchronous request/response, time-limited asynchronous request/response, network time service (NTP protocol)
 - Provides a set of integration interfaces and qualities of service
 - Allows flexibility, federation and consistency of the platform operations
 - High scalability and availability (virtually unlimited scalability)
 - Support a wide spectrum of information exchange scenarios, ranging from best effort notifications, to guaranteed delivery of transactional data



High level summary of platform features (VI)

- Main Security Privacy Trust (SPT) features:
 - Identity and Trust management
 - Access Control (validate a user identification, user only access the information and data they are allowed to access,...)
 - Authentication (authenticating individual users, third-party systems, networked resources,...)
 - Data Security (data encryption and decryption based on credentials)
 - Security Assurance (provide strong security assurance that commercial information and transactions are secure)
 - Provide developer support to ensure the correct usage of necessary security mechanisms in Flspace



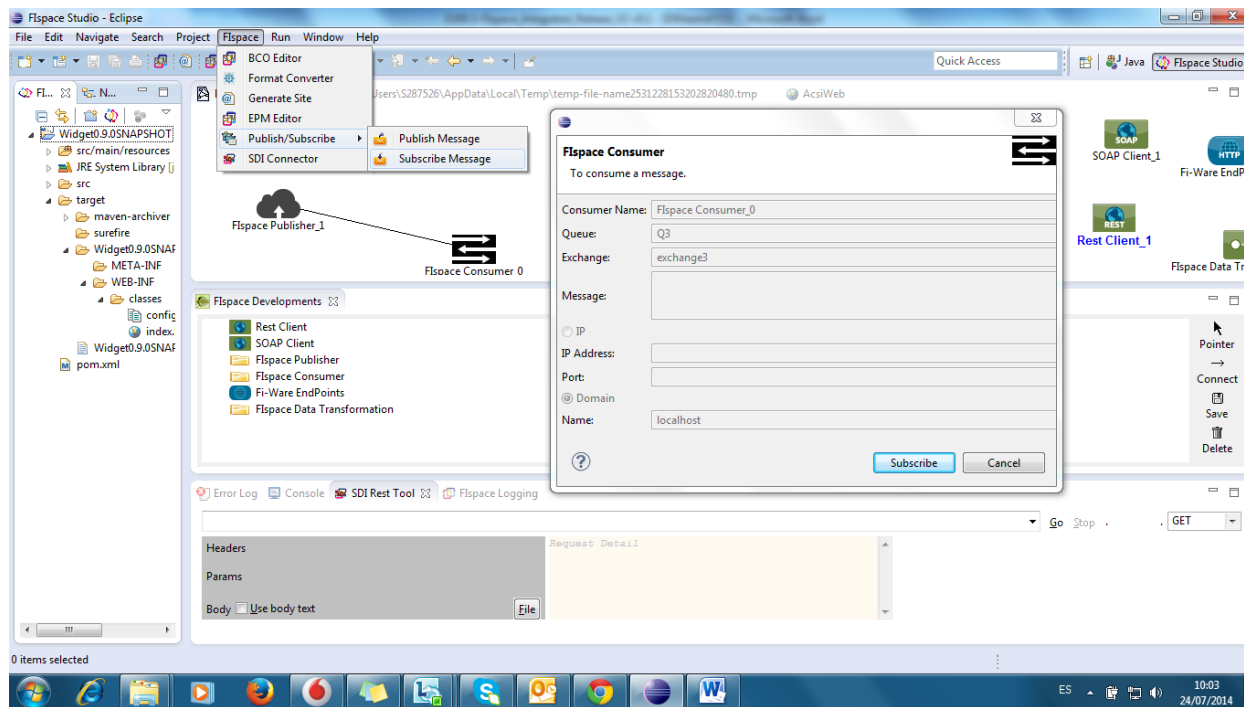
Roadmap

- Based on the Flspace project planning (switch to excel document reference for the presentation of the planning)
- Planning based on month and milestones from M12 to M24
- Milestones: MS12 (April 2014), MS15 (June 2014), MS18 (September 2014), MS21 (December 2014), MS24 (March 2015)
- Each month is organized in release cycle pairs (2 cycles by month)
- The software release tasks include integration tasks in several integration environment(PIE IE, PE), delivery of code and binaries
- Software project management and development is based on Agile concept and best practices, the methodology is based on Scrum methodology



Tools for developers (I)

- The SDK provides tool-support for the development of Flspace Apps (Eclipse plugins and Flspace Studio)
- The SDK will ease the work of App developers during the implementation of the Apps, providing specific tools and libraries that hide the more complex aspects of the platform





Tools for developers (II)

- Main SDK features (I):
 - Flspace SDK provide collection of plugins and wizard developed for the Eclipse platform and corresponding IDE
 - Flspace-bcoeditor plugin: responsible for providing the ACSI editor tool
 - Flspace-converter plugin: provide data conversion utilities (JSON, XML, CSV, EDI...)
 - Flspace-doc plugin: improve the Java doc generation by Flspace using maven capabilities in Eclipse
 - Flspace-epmeditor plugin: EPM editor plugin is responsible for providing the EPM authoring tool (Proton)
 - Flspace-graphic plugin: this plugin is to integrate systems, orchestrate Web services, or smoothly connect anything to anything
 - Flspace-perspective plugin: manage the different perspective and views
 - Flspace-preferences plugin: manage the workspace and workbench preferences
 - Flspace-pubsub plugin: manage the pub/sub functionalities and capabilities
 - Flspace-REST plugin: provide REST tools to test API access and check the result returned
 - Flspace-sdi-connector plugin: provide facilities to manage, use and call the SDI REST API



Tools for developers (III)

- Main SDK features (II):
 - Flspace-SOAP plugin: tool to provide SOAP code generator from a selected WSDL
 - Flspace-uploader plugin: provide facilities to upload the widget to the Flspace front-end and through the Wirecloud GE
 - Flspace-wizard plugin: provide the creation of Flspace applications
 - Flspace-archetypes plugin: Archetype is a Maven project templating toolkit that allows creating application and generating project and code from templates
 - Flspace-xmleditor plugin: Flspace XML editor provides structured form-based UI for viewing and editing the Wirecloud xml file (config.xml)
 - Flspace-loggin-feature plugin: the Flspace logging plugin enables users to store and classify the logs generated by Flspace apps in order to make easy the app development process
 - Flspace pluginX update-site: allow to update the plugins from update-site as a reference point for installation and update of the corresponding plugin
 - Flspace Studio Tool: Flspace Studio is a binary distribution providing all of Flspace SDK plugins. Specifically it is a customised Eclipse IDE designed and preconfigured for the specific needs of Flspace SDK



Tools for developers (IV)

- Others tools:
 - Tools based on Java SDK for java development applications
 - Maven tools
 - Tools compatible with Java technologies
 - Other Tools and SDK compatible to standard and interface protocols (specification and technologies) as REST, SOAP, XML, HTML, Javascript, Web standard, Web services technologies,...



Thank you!